



EKC2024

Europe-Korea Conference on Science and Technology

IMPACT, INNOVATION AND CONNECTIVITY FOR TRANSFORMING TOMORROW TOGETHER

30 July – 02 August, 2024

The Oculus, University of Warwick
United Kingdom

<https://www.ekc2024.org>

Europe-Korea Conference on Science and technology (EKC) has been the premiere conference for Korean and European engineers and scientists to present their recent achievements. Drawing participants from Korea and Europe, EKC seeks to develop new relationships, exchange knowledge & ideas and discuss recent progress and future trends in Science and Technology

EKC2024, the 16th EKC, will be held in Birmingham/Coventry, the UK from 30 July - 2 August 2024. It will be hosted by the Korean Scientists and Engineers Association in the UK (KSEAUk) together with the Korean Federation of Science and Technology Societies (KOFST) and eight other Korean Scientists and Engineers Associations in Europe which are in Germany (VeKNI), France (ASCoF), Austria (KOSEAA), Finland (KOSES), Scandinavia (KSSEA), the Netherlands (KOSEANL), Switzerland (KSEAS), and Belgium (KOSEAbE). Since its first successful start in 2008 in Heidelberg, Germany, EKC has been held annually in different European countries and has become the most important scientific and social event, bringing scientists and engineers from Europe and Korea together. We anticipate around 1000 participants for EKC2024.

PLENARY SPEAKERS



Indro Mukerjee
Innovate UK CEO



Signe Ratso
European Commission
Deputy Director-General,
Directorate-General
"Research & Innovation"



Byungjoo Min
President of the Korea
Institute for
Advancement of
Technology (KIAT)



Tai Sik Lee
President of the Korean
Federation of Science
and Technology
Scientists (KOFST)



Myungshik Kim
Professor in the Faculty
of Natural Sciences,
Department of Physics,
Imperial College London

IMPORTANT DATES

Abstract Submission: 1 March - 3 June 2024

Early Bird Registration: 1 March - 31 May 2024

General Registration: 1 June - 1 July 2024

Dates for EKC2024: 30 July - 2 August 2024

CONTACTS

Secretary: secretary@ekc2024.org

Abstract Submission: paper@ekc2024.org

Technical Support: info@ekc2024.org

SCIENCE & TECHNOLOGY

- ☐ Built Environment and Engineering Design
- ☐ Basic Science
- ☐ Chemical Engineering and Material Science
- ☐ Environment and Energy
- ☐ Electrical, Electronics, & Information Engineering
- ☐ Life Science and Health
- ☐ Nuclear and Fusion Technology
- ☐ Mechanical and Aerospace Technology
- ☐ Marine and Ocean Engineering
- ☐ Women in STEM

VENUE

The Oculus, University of Warwick

Tiered auditorium and plentiful breakout space.

The Oculus is a new teaching building in the University of Warwick. It's a light and airy space with two lecture theatres, one seating 250 and the other 500. In addition, there are also a number of seminar rooms. The layout of the smaller teaching rooms can be changed depending on the needs of staff and students.

The University of Warwick is a prestigious and well-regarded public research university located in Coventry, England. Established in 1965, it has rapidly become one of the leading universities in the United Kingdom and is known for its commitment to research, academic excellence, and innovation.

SCHEDULE & PROGRAMME

Day 1 (Tuesday)	09:00 - 10:40	Session Block 1 (up to 10 parallel sessions)
	10:40 - 11:00	Break
	11:00 - 12:40	Session Block 2
	12:40 - 14:00	Lunch
	14:00 - 16:00	Opening Ceremony & Plenary Session 1
	16:00 - 16:20	Break
	16:20 - 18:00	Poster Session
	18:00 - 18:30	Break
	18:30 - 21:00	Opening Banquet
Day 2 (Wednesday)	09:00 - 10:40	Session Block 3
	10:40 - 11:00	Break
	11:00 - 12:40	Session Block 4
	12:40 - 14:00	Lunch
	14:00 - 16:00	50th Anniversary & Plenary Session 2
	16:00 - 16:20	Break
	16:20 - 18:00	Session Block 5
	18:00 - 18:30	Break
	18:30 - 21:00	VIP Dinner
Day 3 (Thursday)	09:00 - 10:40	Session Block 6
	10:40 - 11:00	Break
	11:00 - 12:40	Session Block 7
	12:40 - 14:00	Lunch
	14:00 - 15:40	Session Block 8
	15:40 - 16:00	Break
	16:00 - 17:40	Session Block 9
	17:40 - 18:30	Break
	18:30 - 21:00	Closing Banquet

SPECIAL PROGRAMME

Specialty Sessions

Anyone who works in the fields of science and technology in Europe or in Korea can organise a scientific session composed of invited talks and contributing talks.

Industry Forum (30th July)

Any company or public establishment can organise an industrial forum on a specific of technology or science.

Job Fair (30th, 31st July and 1st August)

Any company or research institute who wants to recruit promising Korean scientists in Europe can install a booth or make a presentation at the conference.

Science School (31st July and 1st August)

Science School is organised to promote the scientific and technological knowledge and sharing spirit through science and technology for Korean youth in Europe.

VIP Dinner (31st July)

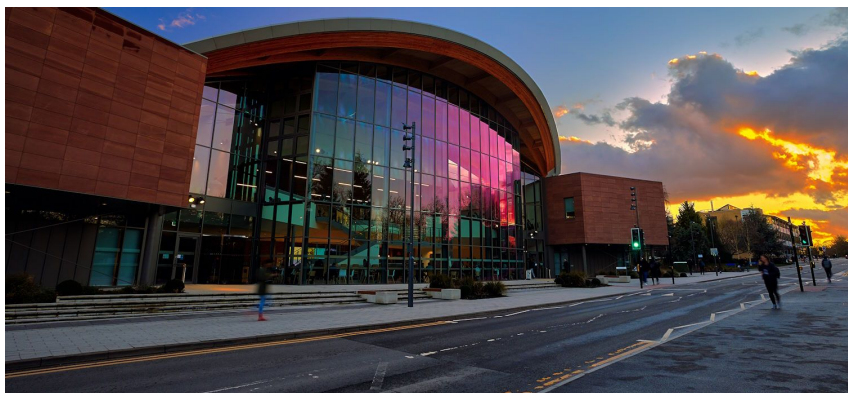
The Slate, University of Warwick

Site Visit (29th July)

TBC

The Korean Scientists and Engineers Association in the UK (KSEAUK)

secretary@kseauk.org
<https://www.kseauk.org>

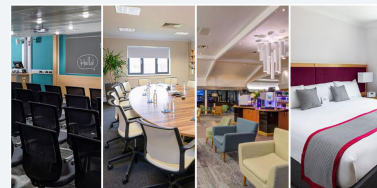


ACCOMMODATION



Scarman

Be immersed in a focussed learning environment with quality meeting spaces, a great food offer and hotel-style bedrooms.



Radcliffe

Discover a 'boutique' hotel experience that will redefine your expectations of a conference centre and meeting venue.

INDUSTRY FORUM

Key Objectives

1. In search of Next Big Thing idea including Deeptech startup activity.
2. Interactive presentation and panel discussion for key market issues (technical, policy, certification, etc) with industry experts, government, investor, academia, and research institutes.
3. Creation of high impact global consortium for technical readiness, supply chain, and business model.

Session 1 AI

Industry focused major trend and issues, idea for collaborative projects, key theme for major sector and region

Session 2 Deeptech

Government focused global R&BD collaboration and venture building for key trend, policy and high impact programme, sector issues

Session 3 Scale-Up

Investor and academia focused global collaboration (technology, supply chain, investment, etc) key trend, best practice, exploration project idea

SOCIAL PROGRAMME

Stratford-upon-Avon

The birthplace of William Shakespeare



Cotswolds

A rural area of south-central England



Warwick Castle

Medieval castle in Warwick, England



Bicester Village

A designer outlet shopping centre

